

履历表(Revisions)						
版本 Rev.	序号 NO.	更新说明 Description	设计 DWN	校对 CHK	日期 DATE	备注 MARK
A	1	送审船级社				

SOLAR DECK(光伏甲板)

TOP DECK(顶甲板)
27000/26900 ABL

E DECK(E甲板)
23700 ABL

D DECK(D甲板)
20500 ABL

C DECK(C甲板)
17000 ABL

OPERATIONAL DRAFT
15000 ABL
(作业吃水)

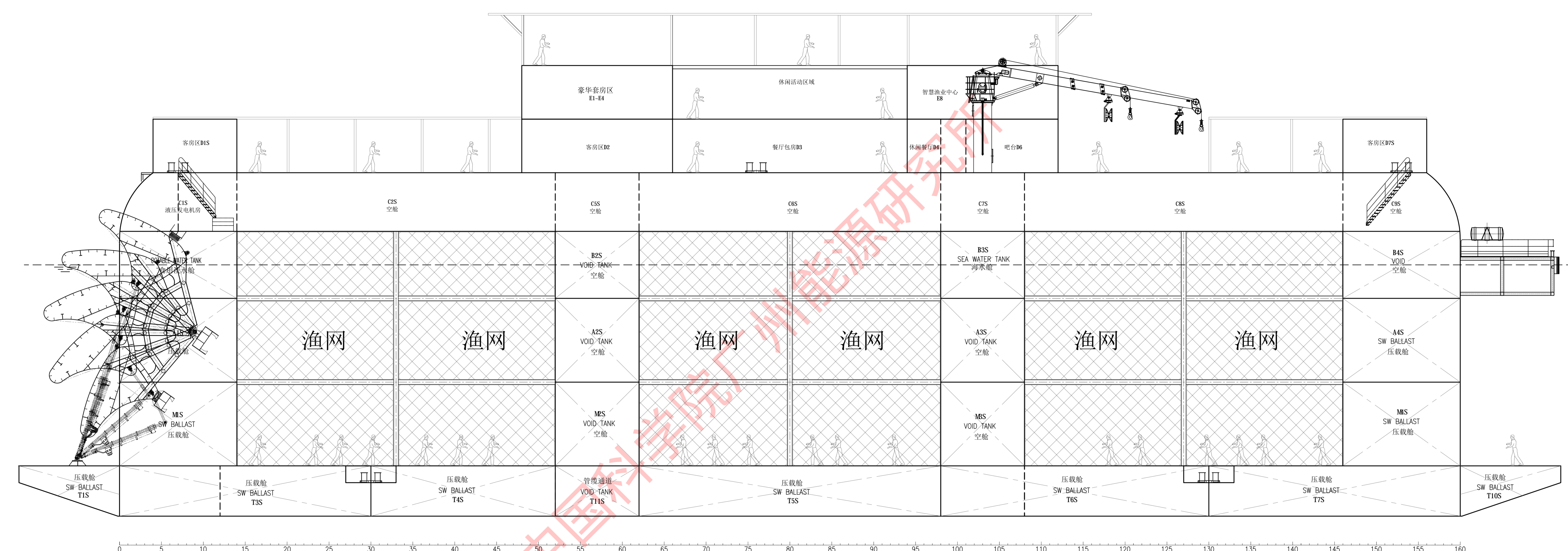
B DECK(B甲板)
13 000 ABL
(抗台水线)

A DECK(A甲板)
8 000 ABL

MAIN DECK(主甲板)
3 000 ABL

TRANSIT DRAFT
2 000 ABL
(拖航吃水)

BASE LINE(基线)



STARBOARD VIEW
右舷视图

主要参数

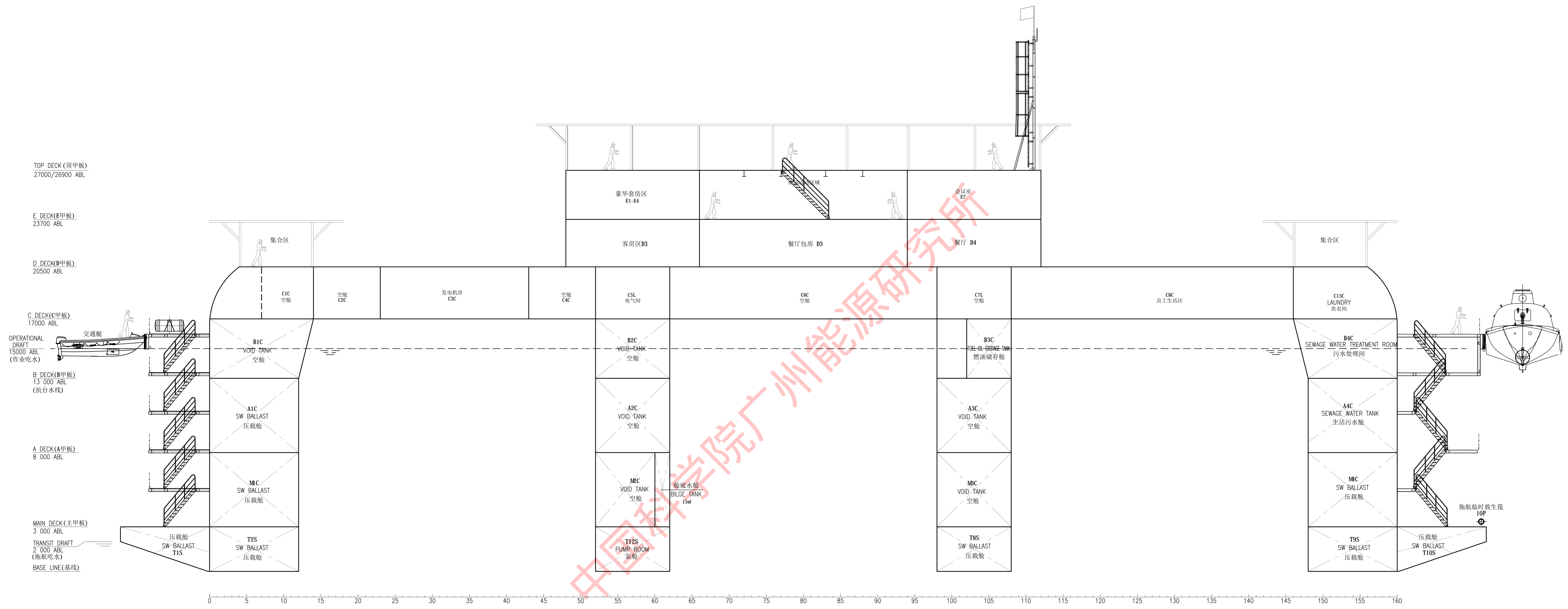
总长 L_{oa}	~92.00 m
船体长度 L_h	80.00 m
型宽 B	36.00 m
型深 H (主甲板)	3.00 m
(干舷甲板)	17.00 m
(顶甲板)	27.00 m
作业吃水 T_d	15.00 m
拖航吃水 T_d	2.00 m
养殖水体(水深20米)	62000 m^3

This document including all revisions is the property of Guangzhou Institute of Energy Conversion, Chinese Academy of Science (GIEC) and contains confidential and proprietary information owned by GIEC. Any copying, use or disclosure of it without the written permission of GIEC is strictly prohibited. This material is protected under trade secret and unfair competition laws and the expression of the information contained therein is protected under copyright laws of P.R.C. Violation thereof may result in criminal penalties and fines.

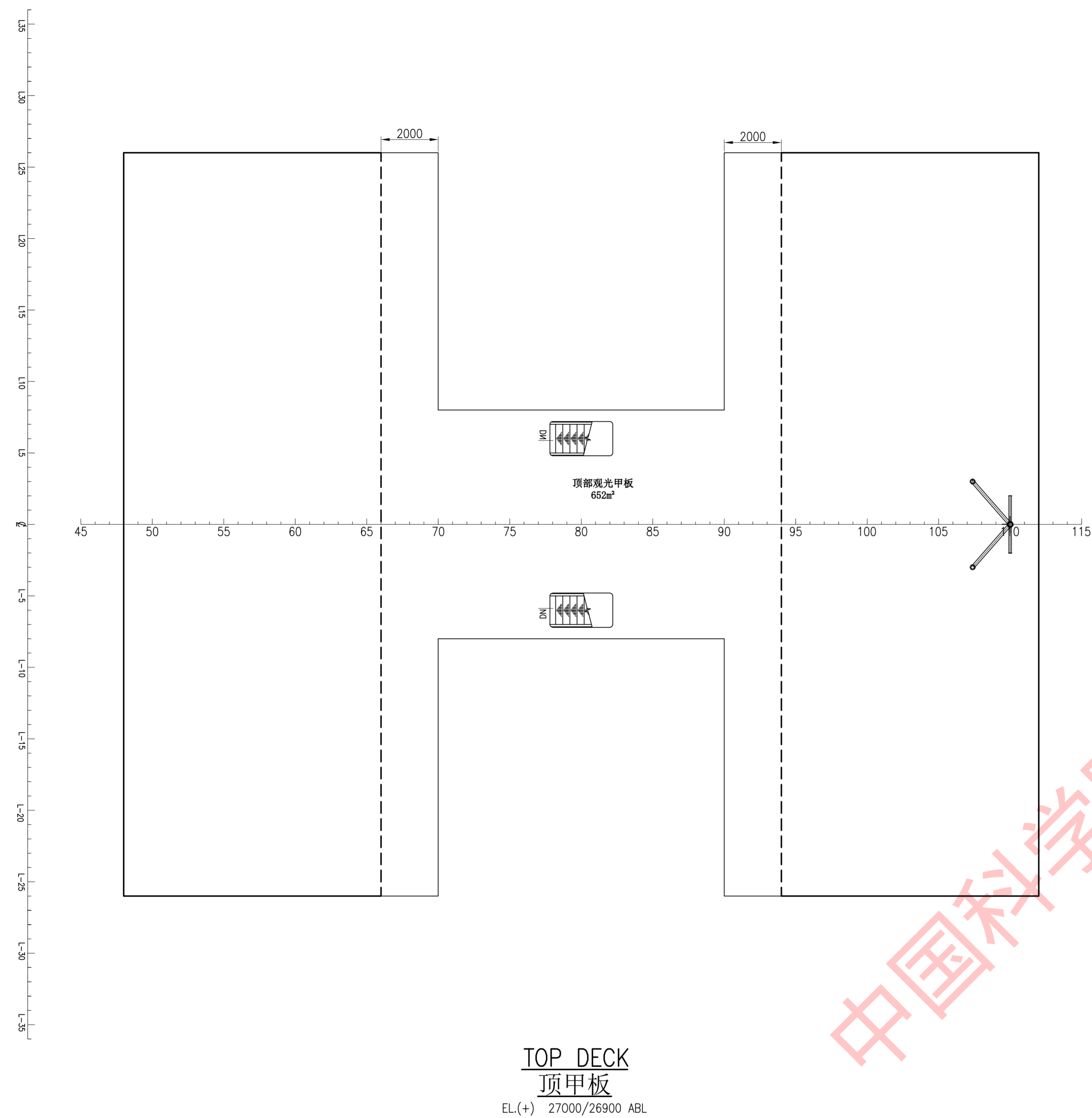
本文件(包括所有修订版)均属中国科学院广州能源研究所(GIEC)所有,包含机密和专有信息,未经本所书面许可,严禁对其进行任何复制,使用或泄露。本文件受商业秘密和不正当竞争法保护,其所含信息的表达受中华人民共和国著作权法保护。违反以上规定可能会导致刑事处罚或罚款。

业主 OWNER		
研发设计 R&D	中国科学院广州能源研究所 Guangzhou Institute of Energy Conversion, CAS	
WX-080G	80米半潜波浪能养殖旅游平台	详细设计
DW:		
CHKD:		
RVE:		
STD:		
APP:		
SCALE: 1:100	REV. B	DWG. NO. NYS-WX-080G-001
	PAGE 1	TOTAL 12

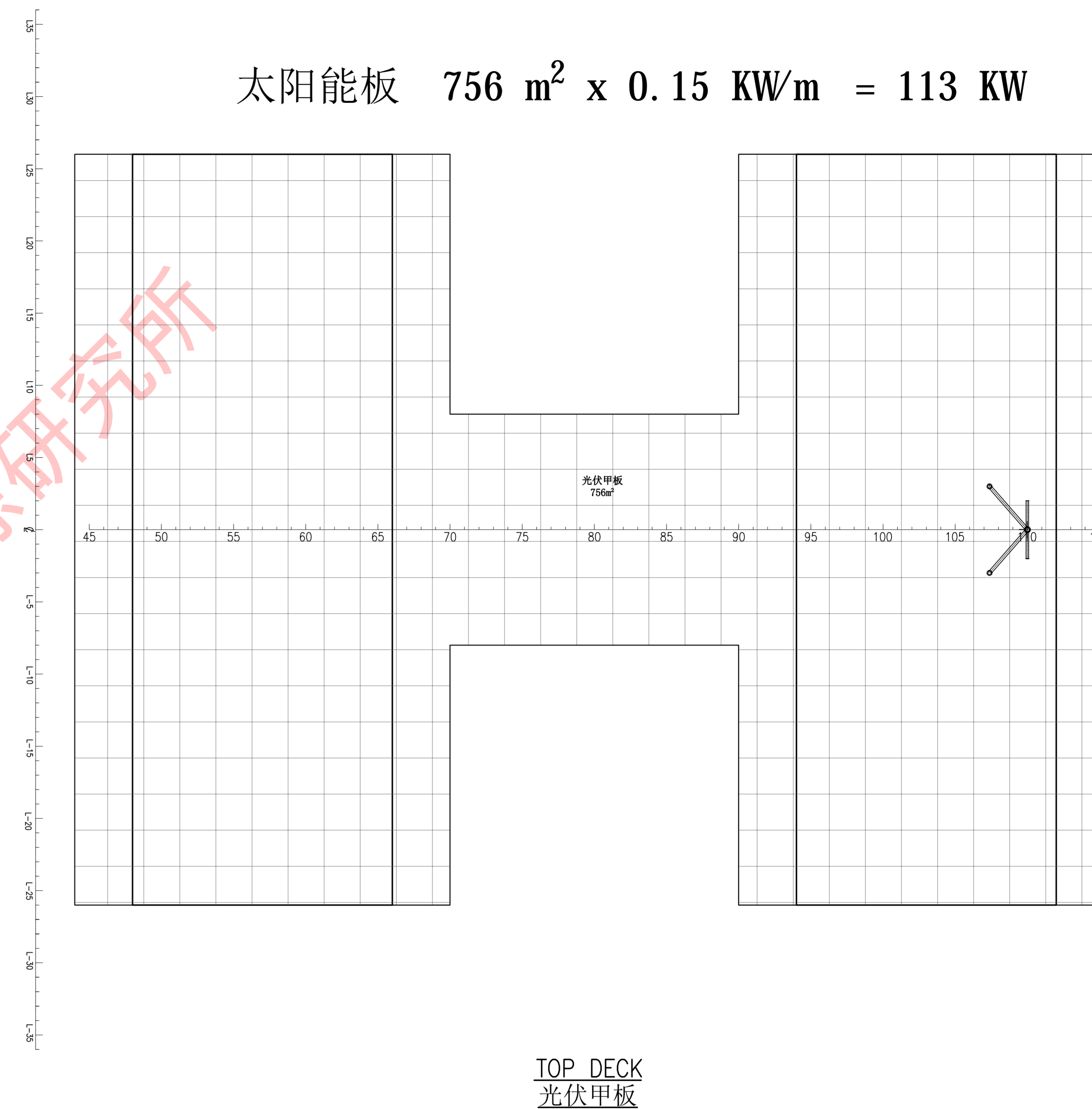
总布置图
GENERAL ARRANGEMENT



CENTER VIEW
船中视图



太阳能板 $756 \text{ m}^2 \times 0.15 \text{ KW/m} = 113 \text{ KW}$



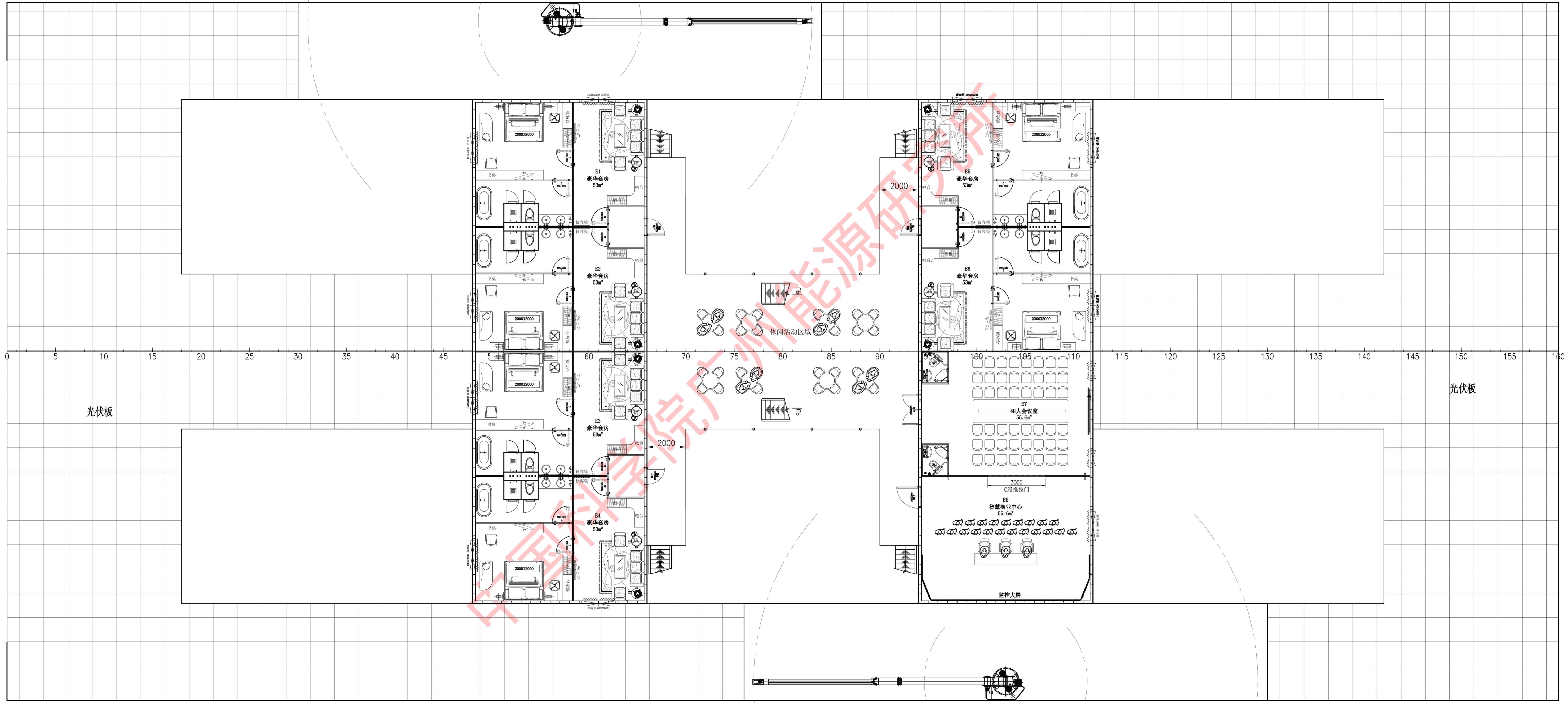
中国科学院广州能源研究所



太阳能板 $1000 \text{ m}^2 \times 0.15 \text{ KW/m}^2 = 150 \text{ KW}$

冷水1进3直接到位
热水管1分3, 用PE管

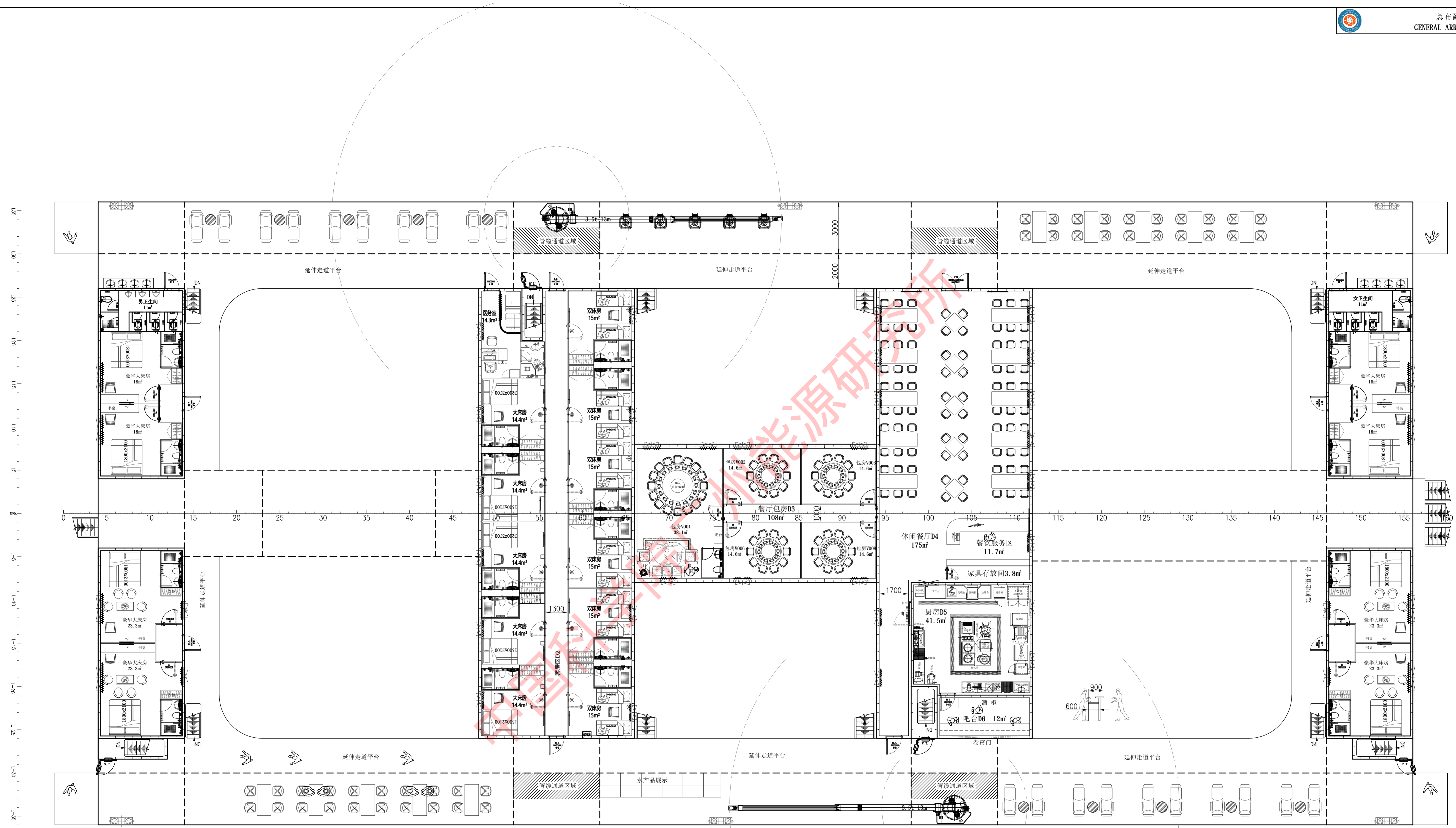
01-1
02-1
03-1
04-1
05-1
06-1
07-1
08-1
09-1
10-1
11-1
12-1
13-1
14-1
15-1
16-1
17-1
18-1
19-1
20-1
21-1
22-1
23-1
24-1
25-1
26-1
27-1
28-1
29-1
30-1
31-1
32-1
33-1
34-1
35-1
36-1
37-1
38-1
39-1
40-1
41-1
42-1
43-1
44-1
45-1
46-1
47-1
48-1
49-1
50-1
51-1
52-1
53-1
54-1
55-1
56-1
57-1
58-1
59-1
60-1
61-1
62-1
63-1
64-1
65-1
66-1
67-1
68-1
69-1
70-1
71-1
72-1
73-1
74-1
75-1
76-1
77-1
78-1
79-1
80-1
81-1
82-1
83-1
84-1
85-1
86-1
87-1
88-1
89-1
90-1
91-1
92-1
93-1
94-1
95-1
96-1
97-1
98-1
99-1
100-1
101-1
102-1
103-1
104-1
105-1
106-1
107-1
108-1
109-1
110-1
111-1
112-1
113-1
114-1
115-1
116-1
117-1
118-1
119-1
120-1
121-1
122-1
123-1
124-1
125-1
126-1
127-1
128-1
129-1
130-1
131-1
132-1
133-1
134-1
135-1
136-1
137-1
138-1
139-1
140-1
141-1
142-1
143-1
144-1
145-1
146-1
147-1
148-1
149-1
150-1
151-1
152-1
153-1
154-1
155-1
156-1
157-1
158-1
159-1
160-1



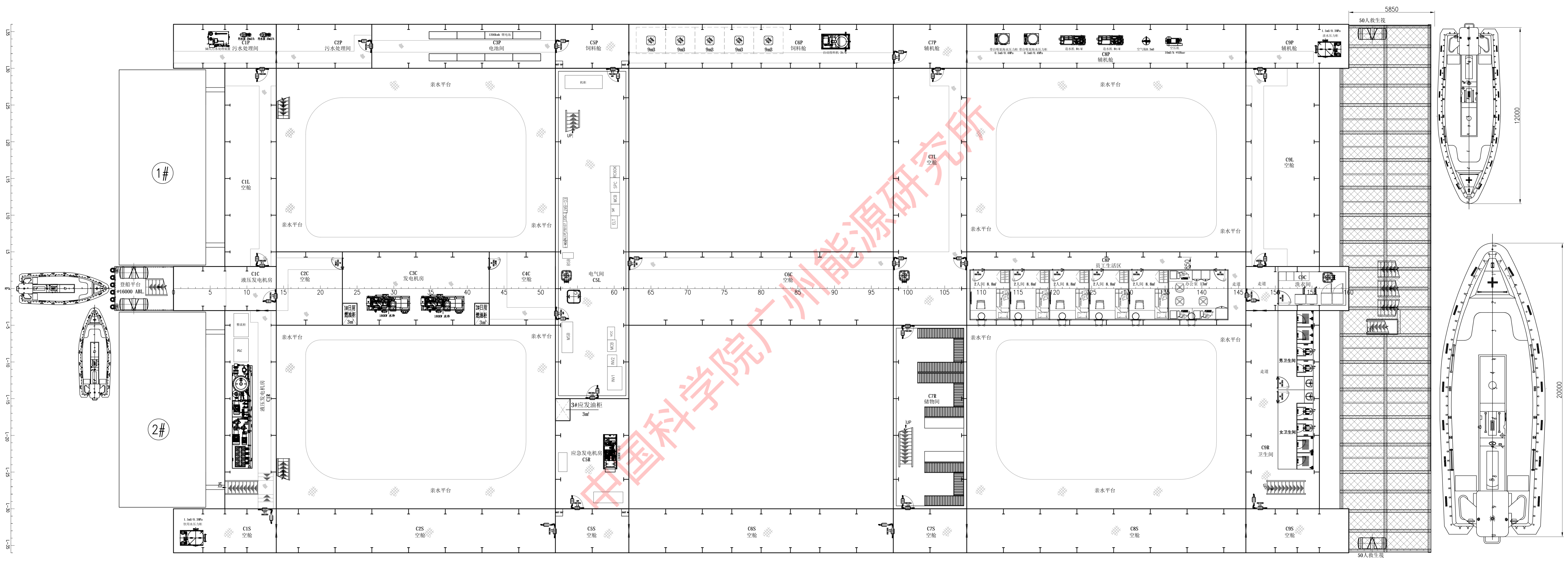
光伏板

光伏板

E DECK
E 甲板
EL.(+) 23.700 ABL



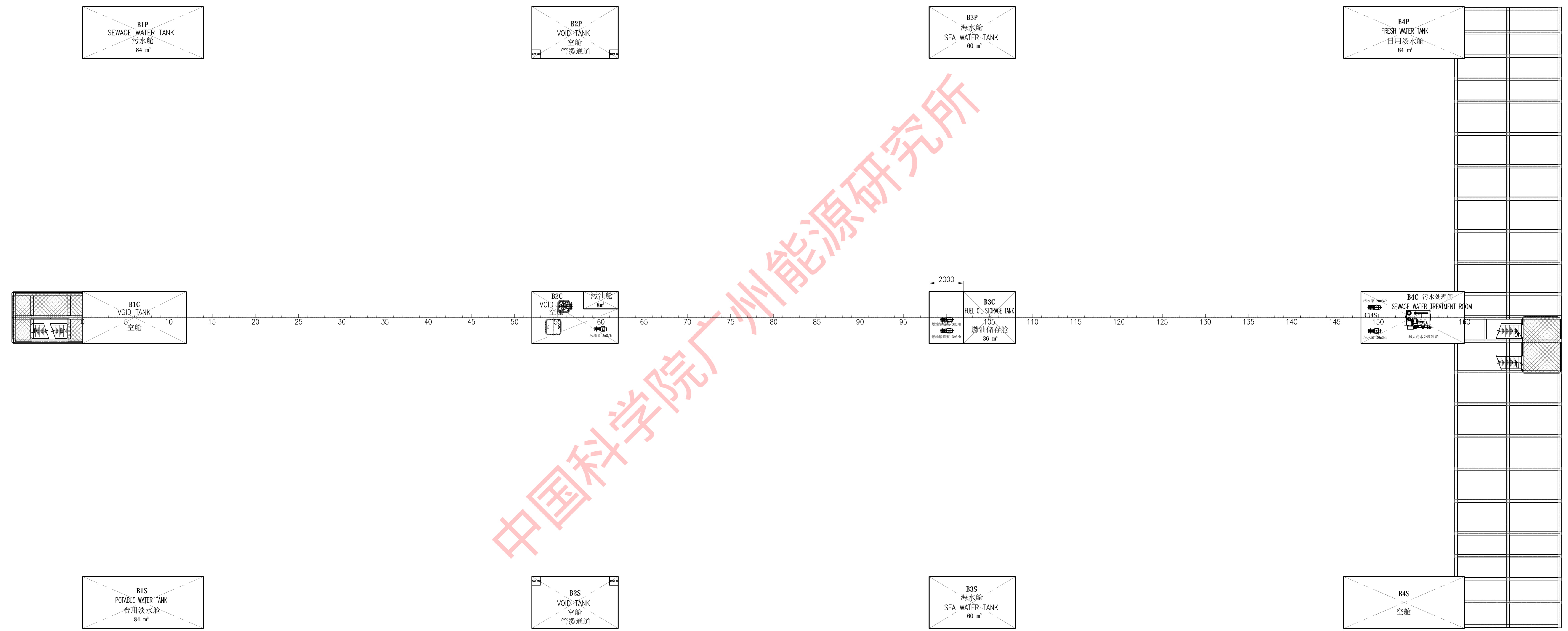
D DECK
D 甲板
EL(+). 20.500 ABL



C DECK
C 甲板
EL.(+) 17 000 ABL

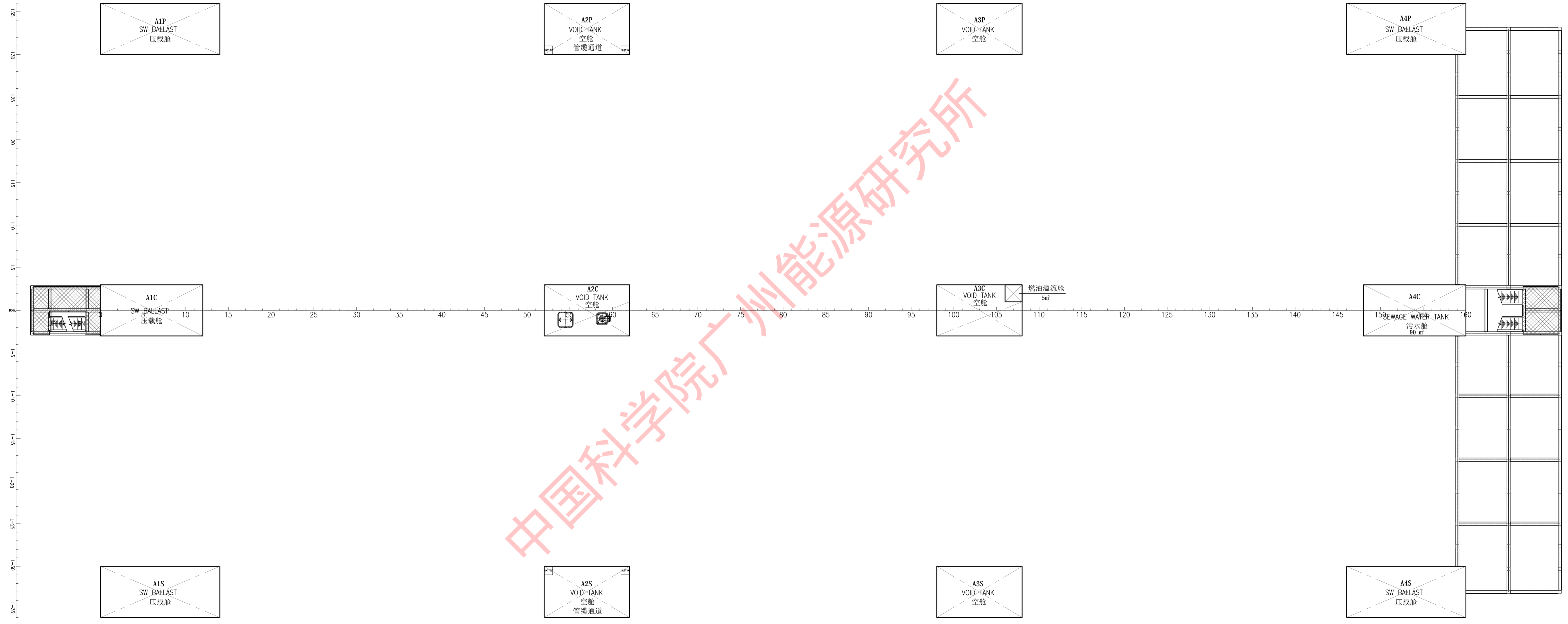


13.5
13.0
12.5
12.0
11.5
11.0
10.5
10.0
9.5
9.0
8.5
8.0
7.5
7.0
6.5
6.0
5.5
5.0
4.5
4.0
3.5
3.0
2.5
2.0
1.5
1.0
0.5
0
-0.5
-1.0
-1.5
-2.0
-2.5
-3.0
-3.5
-4.0

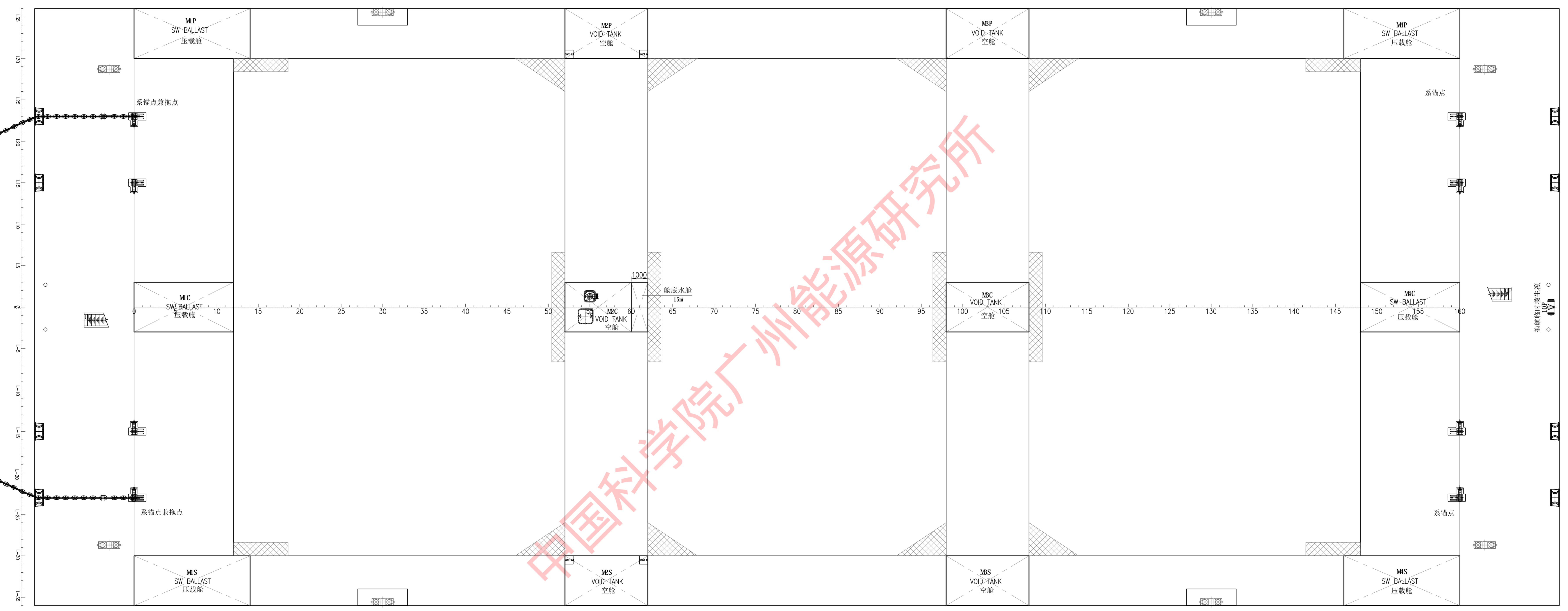


中国科学院广州能源研究所

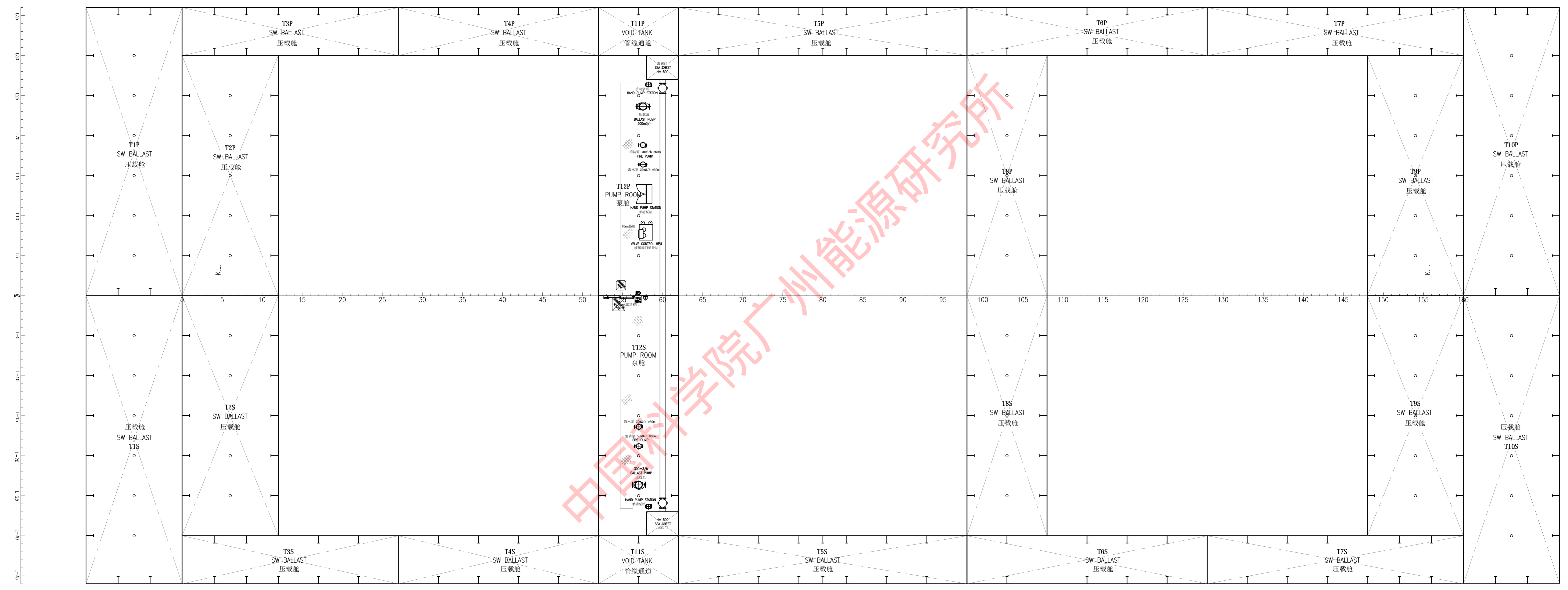
B DECK
B 甲板
EL.(+) 13 000 ABL



A DECK
A 甲板
EL.(+) 8 000 ABL



MAIN DECK
 主甲板



BOTTOM
舱底

E DECK(E甲板)
23700 ABL

D DECK(D甲板)
20500 ABL

C DECK(C甲板)
17000 ABL

OPERATIONAL
DRAFT
15000 ABL
(作业吃水)

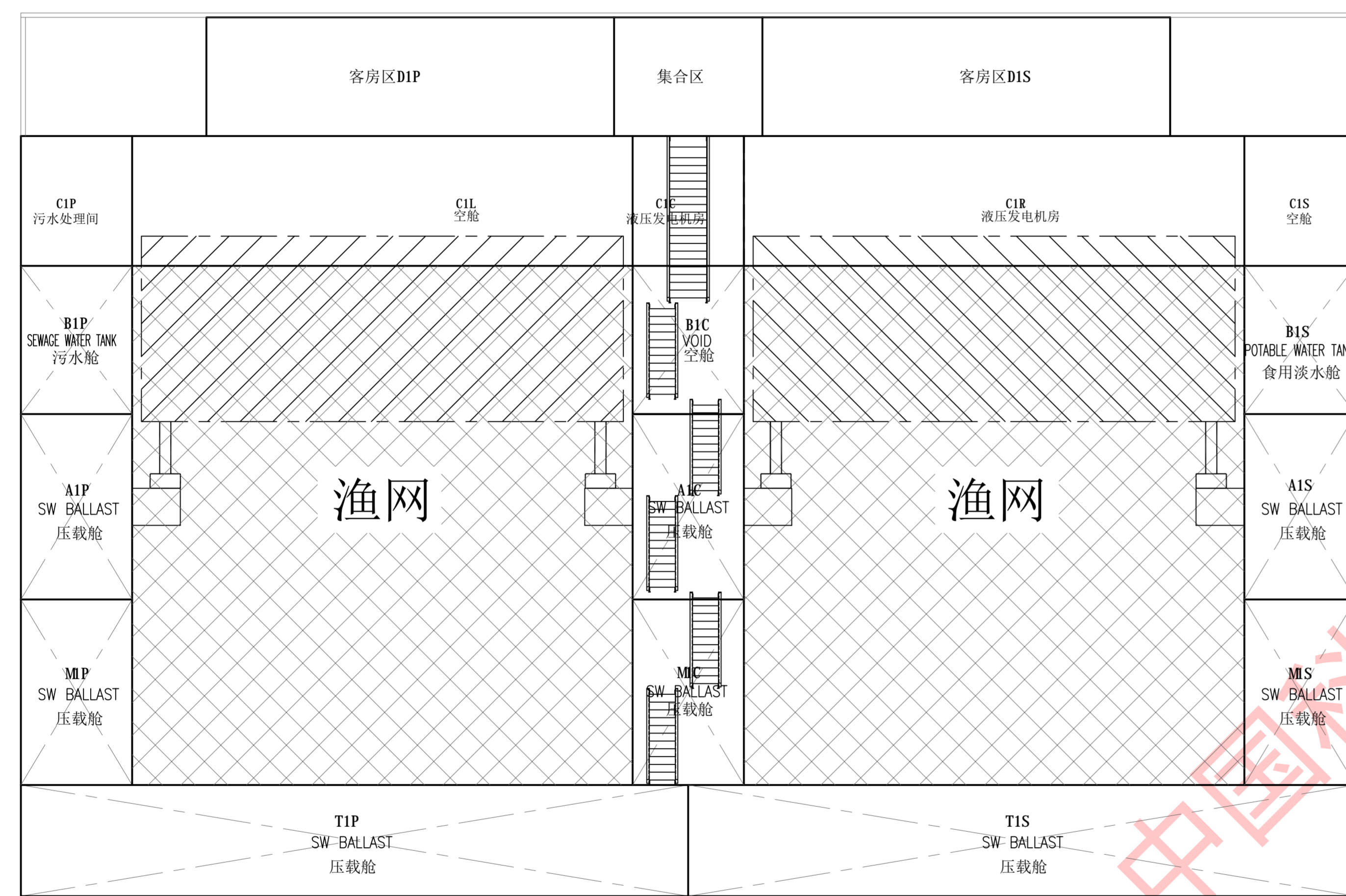
B DECK(B甲板)
13 000 ABL

A DECK(A甲板)
8 000 ABL

MAIN DECK(主甲板)
3 000 ABL

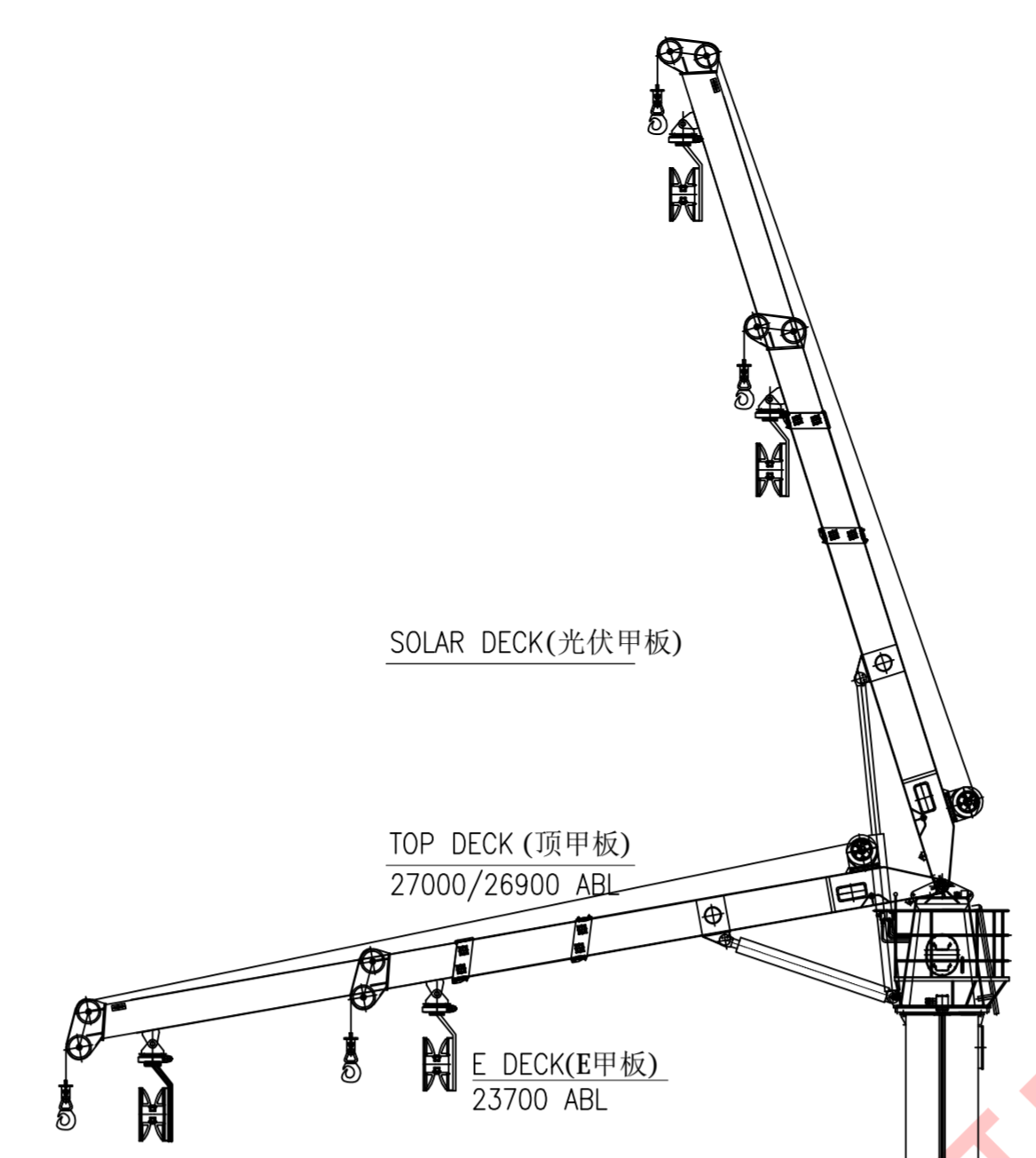
TRANSIT DRAFT
2 000 ABL
(拖航吃水)

BASE LINE(基线)



AFT VIEW
船视图

L35 L30 L25 L20 L15 L10 L5 0 L-5 L-10 L-15 L-20 L-25 L-30 L-35



SOLAR DECK(光伏甲板)

TOP DECK(顶甲板)
27000/26900 ABL

E DECK(E甲板)
23700 ABL

D DECK(D甲板)
20500 ABL

C DECK(C甲板)
17000 ABL

OPERATIONAL
DRAFT
15000 ABL
(作业吃水)

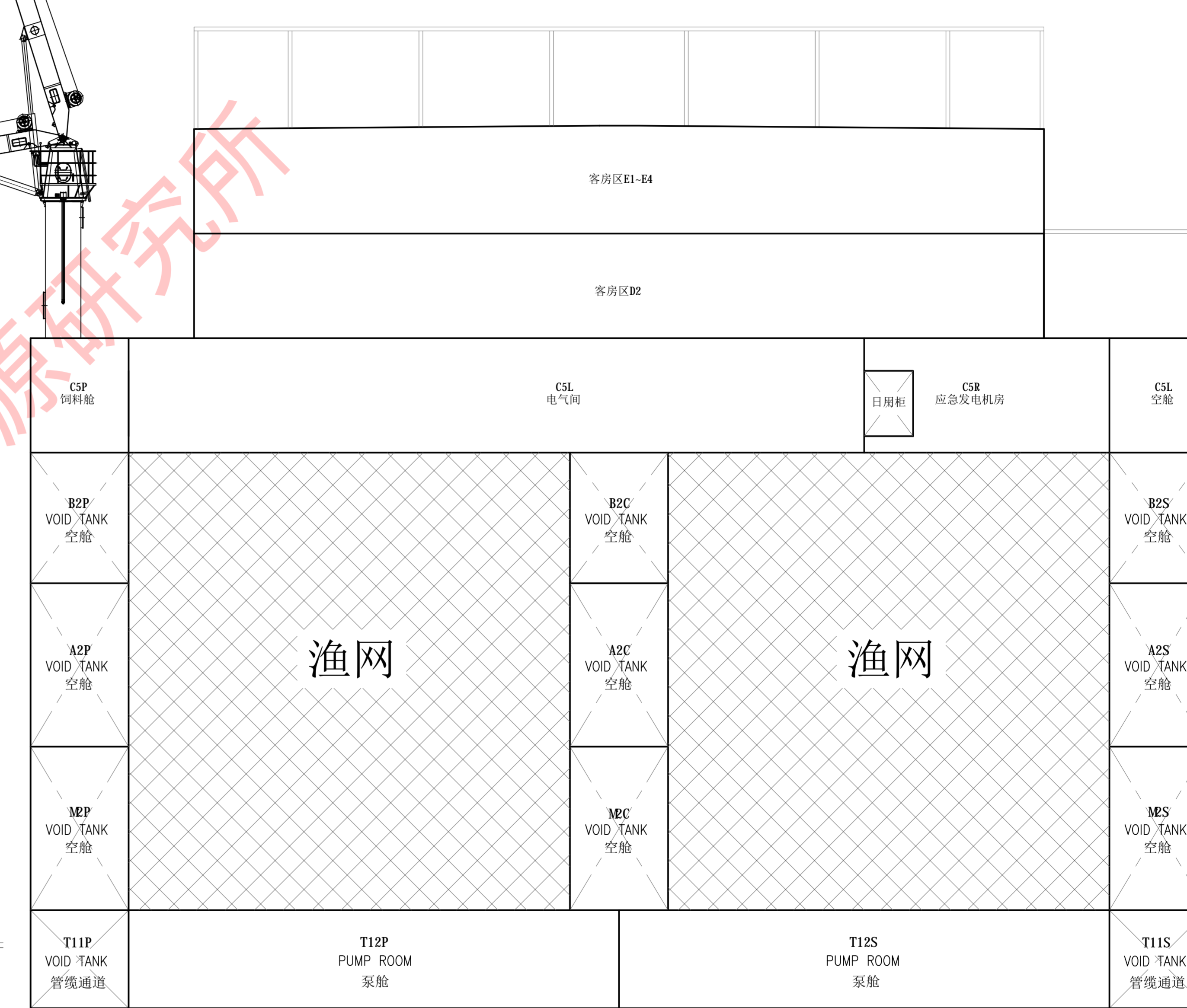
B DECK(B甲板)
13 000 ABL

A DECK(A甲板)
8 000 ABL

MAIN DECK(主甲板)
3 000 ABL

TRANSIT DRAFT
2 000 ABL
(拖航吃水)

BASE LINE(基线)



FR 55
剖面图

L35 L30 L25 L20 L15 L10 L5 0 L-5 L-10 L-15 L-20 L-25 L-30 L-35

E DECK(E甲板)
23700 ABL

D DECK(D甲板)
20500 ABL

C DECK(C甲板)
17000 ABL

OPERATIONAL
DRAFT
15000 ABL
(作业吃水)

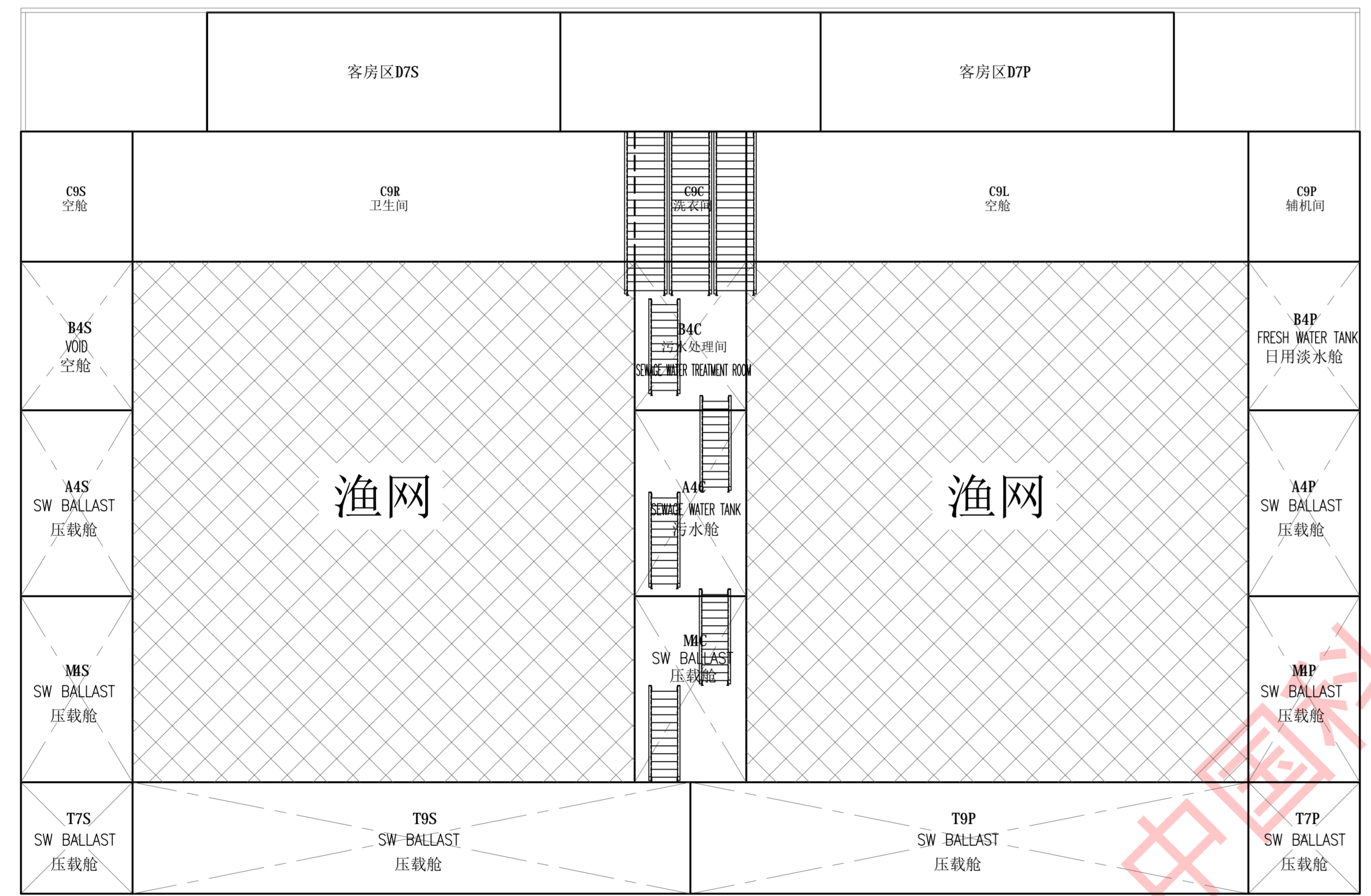
B DECK(B甲板)
13 000 ABL

A DECK(A甲板)
8 000 ABL

MAIN DECK(主甲板)
3 000 ABL

TRANSIT DRAFT
2 000 ABL
(拖航吃水)

BASE LINE(基线)



L35 L30 L25 L20 L15 L10 L5 0 L-5 L-10 L-15 L-20 L-25 L-30 L-35

FWD VIEW
船视图

SOLAR DECK(光伏甲板)

TOP DECK(顶甲板)
27000/26900 ABL

E DECK(E甲板)
23700 ABL

D DECK(D甲板)
20500 ABL

C DECK(C甲板)
17000 ABL

OPERATIONAL
DRAFT
15000 ABL
(作业吃水)

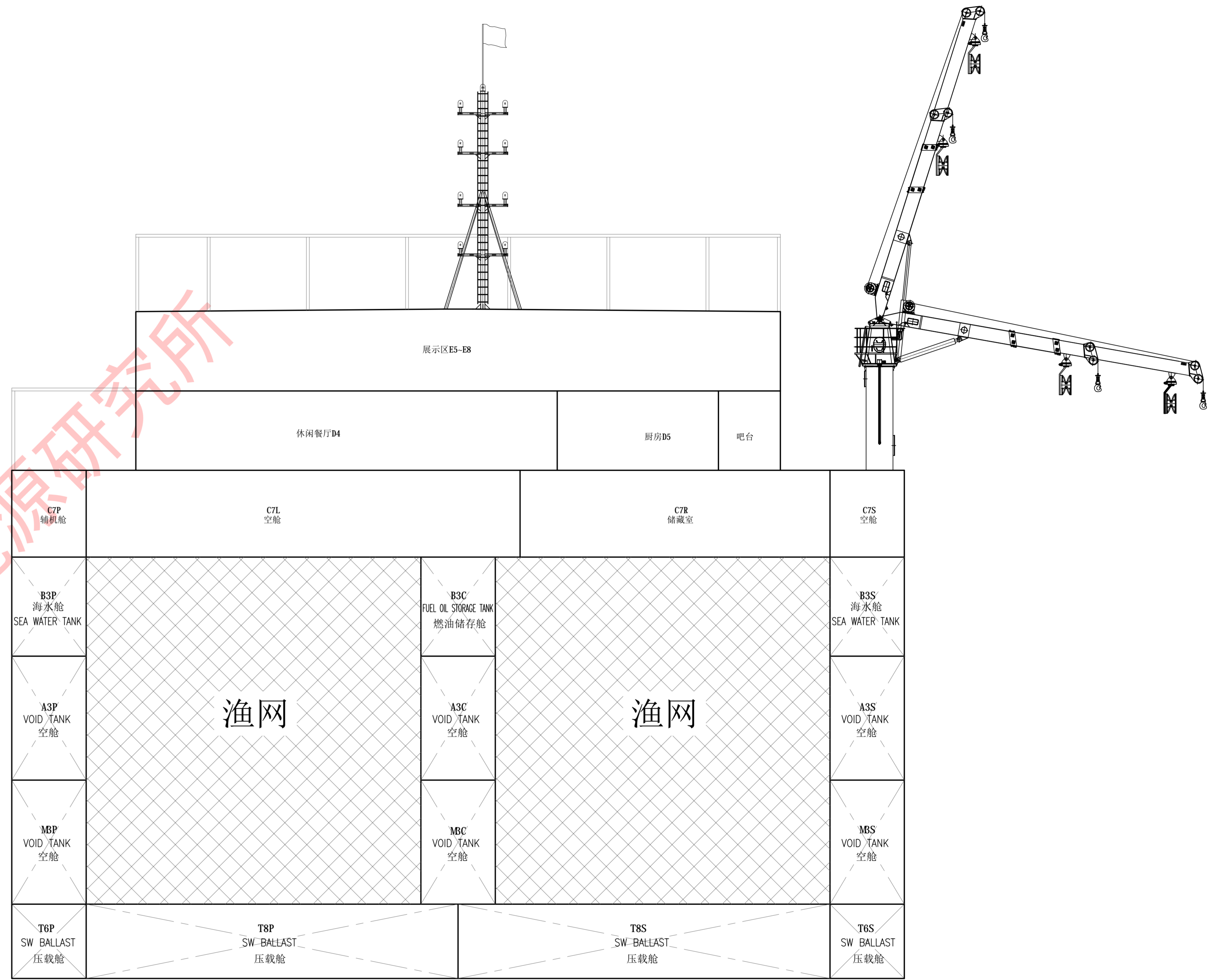
B DECK(B甲板)
13 000 ABL

A DECK(A甲板)
8 000 ABL

MAIN DECK(主甲板)
3 000 ABL

TRANSIT DRAFT
2 000 ABL
(拖航吃水)

BASE LINE(基线)



L35 L30 L25 L20 L15 L10 L5 0 L-5 L-10 L-15 L-20 L-25 L-30 L-35

FR 105
剖面图